



**UNIVERSITY  
PREPARATORY SCHOOL**

PURSuing EXCELLENCE  
TOGETHER

# PANTHER PRIDE

## Superintendent/Principal's Message

Dear Panther Families,

Rotary Club of Redding Honor to Youth Award Recipient

On November 16, Derek Y. was recognized as U-Prep's selection for the Rotary Club of Redding Honor to Youth award. Derek was selected for this award for distinct reasons. He is a leader as represented in his tireless efforts to promote our school's core values through student activities and events; his role as the ASB President was earned, and continues to make it a priority to build upon the positive influence of the program. Derek competes as a Cross Country and Track scholar-athlete, and has served as Team Captain for both sports. His academic choices reflect his dedication to learning and his innate curiosity. He has taken the highest level courses offered in Latin, math, science, English, and history. To his credit, he earned Gold Medal status on the National Latin Exam, twice. Further, he is ranked #1 in his class with a 4.58 weighted GPA. As impressive as all of these accomplishments sound, the standout reason he was selected for this award is because of his love challenge and hard work, and his ability to embrace setback as fundamental to the pursuit of excellence. Congratulations, Derek!

Teachers of the Year

Congratulations to Paul Kaukonen (High School Teacher) and Lonett Sowles (Junior High Teacher) for being honored as U-Prep's Teachers of the Year! Both of these wonderful faculty members meet their students where they are at and work to build upon their strengths and assets. Their capacity to develop positive working relationships is at the heart of their success. They continually strive to develop their subject matter knowledge and craft, believing that learning is a process of constant reflection and improvement. Their dedication to students, their colleagues, and U-Prep's mission seems endless as further recognized by their teacher leadership and commitment to students outside of the school. Mr. Kaukonen and Mrs. Sowles serve as our nominees for the California League of Schools Region 2 High School and Junior High School Teacher of the Year awards. Best wishes for a joyful holiday season!

*Shelle Peterson*

Superintendent/Principal

### DATES TO REMEMBER

|                       |  |
|-----------------------|--|
| <b>Dec. 8</b>         | <b>6th Grade to Nutcracker Ballet</b>  |
| <b>Dec. 8</b>         | <b>Winter Dance</b>                    |
| <b>Dec. 8-9</b>       | <b>Mock Trial to Stockton</b>          |
| <b>Dec. 12</b>        | <b>Winter Strings Concert</b>          |
| <b>Dec. 13</b>        | <b>Winter Band &amp; Choir Concert</b> |
| <b>Dec. 18-20</b>     | <b>Final Exams/Special Schedule</b>    |
| <b>Dec. 20</b>        | <b>First Semester Ends</b>             |
| <b>Dec. 21-Jan. 8</b> | <b>Winter Break</b>                    |
| <b>Dec. 27-31</b>     | <b>Girls Basketball to Alaska</b>      |
| <b>Jan. 9</b>         | <b>School Resumes</b>                  |

### Table of Contents

|                                  |          |
|----------------------------------|----------|
| Principal's Message              | p. 1     |
| Michael J. Stuart Gym Dedication | p. 2     |
| Student of the Quarter           | p. 3     |
| Counseling News                  | p. 5-8   |
| VAPA News                        | p. 9-11  |
| ASB                              | p. 12    |
| Athletics                        | p. 13-14 |
| U News                           | p. 15-23 |
| Academic Calendar                | p. 24    |



### Who We Are - Our Vision

University Preparatory School is a small, grades 6-12, college preparatory school committed to university level preparation in fine arts, literature, languages, history, mathematics, science, and philosophy. Working together, University Preparatory School staff, parents, and community will offer students learning experiences needed to achieve their leadership and academic potential, to become creative thinkers, compassionate human beings, and ethical participants in a multi-cultural, democratic society. Students will be immersed in rigorous academics and meaningful extra-curricular activities and supported by a close-knit community of teacher/advisors, which will enable them to choose any course of post-secondary education.

# Michael J. Stuart Gymnasium

## Dedication Ceremony

December 12, 2017

Halftime During Boys Varsity Basketball Game

U-Prep vs. Las Plumas 7:00pm

Please join us in recognizing Michael J. Stuart for his significant contributions to the Shasta Union High School District and University Preparatory School



University Preparatory School Board Member, 2013 - Present

Shasta Union High School District Superintendent, 1998 – 2008

Enterprise High School Principal, 1992 – 1998

Shasta High School Assistant Principal, 1989 – 1991

Teacher and Coach – 15 Years



# IN THE SPOTLIGHT

## STUDENTS OF THE QUARTER

### 2nd QUARTER AWARDS

On December 5th, the Student of the Quarter award recipients and their families joined us in the Board room to celebrate their accomplishments. Superintendent/Principal Shelle Peterson recognized each recipient by sharing their unique attributes. Students received an honorary certificate, and a special t-shirt.

Refreshments were enjoyed after the ceremony.

Congratulations to all of our Second Quarter Student of the Quarter Award recipients and their families!

#### HIGH SCHOOL STUDENTS OF THE QUARTER



Front Row, left to right: Elisha K., Allison G., Erin H., Riley F., Nelly M., Connor D., Adam V.  
Back Row, left to right: Julia H., Emily K., Britain S., Miles M., Kobe C., Alan D., Cameron D., Sheetal B., Nicole W., Addy H., Coby S.

#### JUNIOR HIGH STUDENTS OF THE QUARTER



Front Row, left to right: Miranda H., Emmalyn W., Ella B., Jaelyn O., Rylin B., Haya S., Lillian D., Lucia R.  
Back Row, left to right: Lily F., Kylie W., Lorien A., Michael H., Alex L., Mehar S., Ian H., Will C., Jack P., Elijah R., Emerson L., James J. NOT PICTURED: Star T.

## College & Career Corner + Counseling News

Ms. Haworth, Mr. Williams, & Mr. Maikranz

### PSAT NEWS

PSAT scores will be available to students online around December 11<sup>th</sup>. After Christmas break students will receive a paper copy of their scores! Please see the following pages for a score report example.

PSAT/NMSQT- Helpful link to "understand your scores"

<https://collegereadiness.collegeboard.org/psat-nmsqt-psat-10/scores/understanding-scores>

### PEER CONFLICT MANAGEMENT

If your student is having an issue with a friend or peer, U-Prep offers trained peer conflict managers on campus who are available every day of the week. It is normal from time to time to get back on the right track with a peer and participating in a conflict management session is a great way to facilitate that process. If you are interested in the program, please contact middle school counselor, Mr. Williams at [mwilliams@suhsd.net](mailto:mwilliams@suhsd.net) for more information.

### SENIOR PARENTS

Monday, December 11<sup>th</sup> from 7:15-8:00am will be the final opportunity to meet with Jim Graul, representative from Ultimate Graduation Company in the main lobby. Please plan ahead and order your graduation announcements, cap, gown, tassel and more.

### U-PREP STUDENTS LOOK TO THE FUTURE

During the month of November freshman, sophomore and junior classes participated in a college lesson plan presentation. Many topics were covered including post high school planning, college searches, application processes, Naviance, SAT/ACT registration and financial aid resources!

### FAFSA ASSISTANCE

Attention Senior students & parents: Assistance is available if you need help with submitting your 2018/19 FAFSA by March 2<sup>nd</sup> (Cal Grant Deadline). There are multiple opportunities to attend a Shasta College FAFSA Workshop.

#### Where:

Shasta College, Main Campus

#### When:

February 21<sup>st</sup> 2018 (6:00pm-8:00pm) Building 2200, Room 2209

February 22<sup>nd</sup> 2018 (3:00pm-5:00pm) Building 200 (Library), Room 243

February 23<sup>rd</sup> 2018 (10:00am-12:00pm) Building 2200, Room 2217

RSVP not required

Students and parents should apply for their FSA ID (if they do not already have one) 3-4 days prior to the workshop.

**Hi, Ima B. Student**

School Name: John F. Kennedy High School, School Code: 123456  
2016, Grade: 11th Grade  
Student ID: 24068907  
Optional Code: 00  
Access Code: A02670146P  
College Board ID: 12345678



# PSAT/NMSQT®

Preliminary SAT/National Merit Scholarship Qualifying Test

## Your Score Report

Get your full report online  
[studentscores.collegeboard.org](https://studentscores.collegeboard.org)

Access Code **A02670146P**



### SAT® Practice

Connect to Khan Academy®  
for FREE, world-class SAT  
practice on [satpractice.org](https://satpractice.org).



### AP® and Course Work

See which AP courses may  
be good matches for you.



### Register for the SAT

Select an SAT test date, and  
register for it now.

### Your Evidence-Based Reading and Writing Score

**430** | 160 to 760

Your Nationally  
Representative

**31st**

Sample  
Percentile



Your scores indicate you are close to being on track for college readiness, but you need to continue to strengthen your skills.

Let's get you back on track, so you won't have to take noncredit courses in college. You have free, personalized recommendations waiting for you on [satpractice.org](http://satpractice.org).

### Your Total Score

**960** | 320 to 1520

Your Nationally  
Representative

**51st**

Sample  
Percentile

Keep in mind,  
the PSAT/NMSQT<sup>®</sup>  
and SAT<sup>®</sup> are on  
the same scale.

Your score shows you how you would have scored that day on the SAT. How well you do depends on what you do next!

### Your Math Score

**530** | 160 to 760

Your Nationally  
Representative

**69th**

Sample  
Percentile



You are on track for college readiness.

Stay on track and continue your progress. Start now with your free, personalized recommendations waiting for you on [satpractice.org](http://satpractice.org).

#### The College and Career Readiness Benchmark

Reaching your grade-level benchmark means that you are likely on track to be ready for select first-year, credit-bearing college courses.



Need to strengthen skills



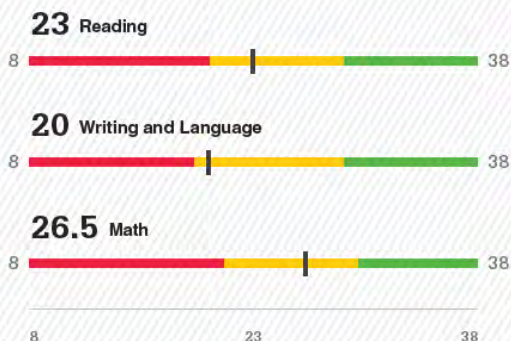
Approaching Benchmark



Meet or exceed Benchmark

\*The red, yellow, and green ranges in the test scores and subscores reflect your areas of strengths and weaknesses, compared to the typical performance of students in your grade.

### Test Scores 8 to 38 range\*



### Cross-Test Scores 8 to 38 range

**25** Analysis in History/Social Studies  
**20** Analysis in Science

If a student were to take the same test repeatedly (with no new learning), the standard deviation of the student's repeated test scores is called the standard error of measurement (SEM). Your score range is computed as your score  $\pm$  SEM. For PSAT/NMSQT, these ranges are approximately:

Total Score: Your score  $\pm$  40 points.  
Evidence-Based Reading and Writing Section Score: Your score  $\pm$  25 points.  
Math Section Score: Your score  $\pm$  33 points.  
Test Scores and Cross-Test Scores: Your score  $\pm$  2 points.  
Subscores: Your score  $\pm$  1 to 2 points.

Remember that you will receive scores in the same areas when you take the SAT.

### Subscores 1 to 15 range\*



**Ima B. Student**

2016, Grade: 11th Grade, Student ID 24068907

## National Merit Scholarship Corporation

National Merit Scholarship Corporation (NMSC) conducts the National Merit® Scholarship Program, an academic competition for recognition and college scholarships. To designate students who qualify for recognition in its 2018 competition, NMSC will consider the 2016 PSAT/NMSQT® Selection Index scores of some 1.6 million test-takers (usually high school juniors) who meet program entry requirements. For more information, please visit: [www.nationalmerit.org](http://www.nationalmerit.org).

If any of your responses to NMSC's "Entry Requirements" questions (see right-hand column) are inaccurate or there has been a change in plans that may affect program entry, write immediately to:

**National Merit Scholarship Corporation**  
Attn: Scholarship Administration  
1560 Sherman Avenue, Suite 200  
Evanston, IL 60201-4897

Include your name and home address along with your high school name, address, and six-digit code number.

### Your NMSC Selection Index

# 139

NMSC uses a Selection Index based on PSAT/NMSQT scores as an initial screen of students who enter its scholarship programs. To calculate your Selection Index, double the sum of your Reading, Writing and Language, and Math Test scores.

### Eligibility Information

If your Selection Index places you among the 50,000 high scorers who qualify for National Merit Scholarship Program recognition, you will be notified next September.

### Entry Requirements

(information you provided on your answer sheet)

High school student:

**YES**

Year to complete high school and enroll full-time in college:

**2018**

Years to be spent in grades 9–12:

**4**

U.S. Citizenship:

**YES**

## Your Scores: Next Steps

Additional skills and improvement suggestions can be found in your online score report.

Your score indicates that you are already likely able to:

Reading Test

Improve your skills by focusing on the following suggestions:

Revise text as needed to improve the exactness or content appropriateness of word choices within somewhat challenging texts

Retain or add information or ideas to a piece of a text to support claims or points in somewhat challenging text

Revise somewhat challenging text to ensure that information is presented in the most logical order



Retain or add information or ideas to a piece of text to support claims or points in challenging text

Use a variety of sentence structures to accomplish a rhetorical purpose such as persuading an audience

Revise text as needed to improve the exactness or content appropriateness of word choices within challenging texts

### Writing and Language Test

Draw reasonable conclusions from somewhat challenging texts

Describe the overall structure of a somewhat challenging text

Identify claims and counterclaims explicitly stated in a somewhat challenging passage



Draw reasonable inferences and logical conclusions from challenging texts

Analyze information presented quantitatively in such forms as graphs, tables, and charts and relate that information to information presented in somewhat challenging text

Determine how the selection of specific words shapes meaning and tone in a challenging passage

### Math Test

Interpret a linear inequality in one variable with rational coefficients that represents a context. Select the equation of a line of best fit and interpret the slope and intercept of the line in the context of the situation (when a linear model is appropriate)

Interpret sample statistics understanding and using margin of error

Solve and interpret a quadratic function or equation that represents a context and requires multiple steps

Calculate and interpret frequency distributions using tables and other representational methods



Determine how a graph may be affected by a change to its equation

Determine the value of a constant or coefficient for an equation with no solution or infinitely many solutions

Using a specified model, make a prediction and compare the predicted values with the actual values in the data set

Within a context, compare the center of two separate data sets with different spreads

Determine whether two events are independent given their probabilities

## Get more next steps online

[studentscores.collegeboard.org](http://studentscores.collegeboard.org)



### SAT Practice

Connect to Khan Academy for FREE, world-class SAT practice on [satpractice.org](http://satpractice.org).



### AP® and Course Work

See which AP courses may be good matches for you.



### Register for the SAT

Select an SAT test date and register for it now.

**Ima B. Student** 2016, Grade: 11th Grade

# Your Question-Level Feedback

## Reading

| Question # | Correct | Your Answer | Difficulty | Subscore | Cross-Test Score |
|------------|---------|-------------|------------|----------|------------------|
| 1          | A       | ✓           | ■ ■ ■      |          |                  |
| 2          | B       | A           | ■ ■ ■      | COE      |                  |
| 3          | B       | ✓           | ■ ■ ■      |          |                  |
| 4          | B       | A           | ■ ■ ■      | WIC      |                  |
| 5          | C       | ✓           | ■ ■ ■      |          |                  |
| 6          | D       | ✓           | ■ ■ ■      |          |                  |
| 7          | B       | ✓           | ■ ■ ■      | COE      |                  |
| 8          | A       | ✓           | ■ ■ ■      | WIC      |                  |
| 9          | D       | ✓           | ■ ■ ■      | WIC      |                  |
| 10         | A       | ✓           | ■ ■ ■      |          | HSS              |
| 11         | D       | C           | ■ ■ ■      | WIC      | HSS              |
| 12         | D       | B           | ■ ■ ■      | WIC      | HSS              |
| 13         | D       | A           | ■ ■ ■      | COE      | HSS              |
| 14         | A       | C           | ■ ■ ■      |          | HSS              |
| 15         | C       | B           | ■ ■ ■      | COE      | HSS              |
| 16         | B       | C           | ■ ■ ■      |          | HSS              |
| 17         | D       | C           | ■ ■ ■      |          | HSS              |
| 18         | B       | D           | ■ ■ ■      |          | HSS              |
| 19         | A       | ✓           | ■ ■ ■      |          | SCI              |
| 20         | C       | ✓           | ■ ■ ■      |          | SCI              |
| 21         | B       | D           | ■ ■ ■      | COE      | SCI              |
| 22         | D       | ✓           | ■ ■ ■      |          | SCI              |
| 23         | B       | D           | ■ ■ ■      |          | SCI              |
| 24         | D       | ✓           | ■ ■ ■      | WIC      | SCI              |
| 25         | C       | ✓           | ■ ■ ■      | WIC      | SCI              |
| 26         | B       | A           | ■ ■ ■      |          | SCI              |
| 27         | B       | C           | ■ ■ ■      |          | SCI              |
| 28         | A       | C           | ■ ■ ■      | COE      | SCI              |
| 29         | D       | A           | ■ ■ ■      | WIC      | HSS              |
| 30         | B       | A           | ■ ■ ■      |          | HSS              |
| 31         | D       | ✓           | ■ ■ ■      | COE      | HSS              |
| 32         | A       | ✓           | ■ ■ ■      |          | HSS              |
| 33         | C       | ✓           | ■ ■ ■      | COE      | HSS              |
| 34         | A       | B           | ■ ■ ■      | WIC      | HSS              |
| 35         | A       | B           | ■ ■ ■      |          | HSS              |
| 36         | C       | Ø           | ■ ■ ■      |          | HSS              |
| 37         | B       | C           | ■ ■ ■      |          | HSS              |
| 38         | C       | D           | ■ ■ ■      |          | HSS              |
| 39         | C       | ✓           | ■ ■ ■      |          | SCI              |
| 40         | C       | ✓           | ■ ■ ■      |          | SCI              |
| 41         | B       | ✓           | ■ ■ ■      |          | SCI              |
| 42         | B       | ✓           | ■ ■ ■      | COE      | SCI              |
| 43         | A       | B           | ■ ■ ■      |          | SCI              |
| 44         | A       | ✓           | ■ ■ ■      | WIC      | SCI              |
| 45         | A       | C           | ■ ■ ■      |          | SCI              |
| 46         | D       | A           | ■ ■ ■      | COE      | SCI              |
| 47         | C       | B           | ■ ■ ■      |          | SCI              |

## Writing and Language

| Question # | Correct | Your Answer | Difficulty | Subscore | Cross-Test Score |
|------------|---------|-------------|------------|----------|------------------|
| 1          | D       | C           | ■ ■ ■      | SEC      |                  |
| 2          | B       | ✓           | ■ ■ ■      | EOI      | HSS              |
| 3          | C       | D           | ■ ■ ■      | SEC      |                  |
| 4          | C       | A           | ■ ■ ■      | SEC      |                  |
| 5          | B       | D           | ■ ■ ■      | SEC      |                  |
| 6          | B       | D           | ■ ■ ■      | COE, EOI | HSS              |
| 7          | A       | D           | ■ ■ ■      | WIC, EOI | HSS              |
| 8          | B       | C           | ■ ■ ■      | EOI      | HSS              |
| 9          | A       | B           | ■ ■ ■      | WIC, EOI | HSS              |
| 10         | D       | ✓           | ■ ■ ■      | SEC      |                  |
| 11         | D       | ✓           | ■ ■ ■      | COE, EOI | HSS              |
| 12         | B       | ✓           | ■ ■ ■      | SEC      |                  |
| 13         | C       | ✓           | ■ ■ ■      | SEC      |                  |
| 14         | C       | B           | ■ ■ ■      | SEC      |                  |
| 15         | D       | ✓           | ■ ■ ■      | WIC, EOI | SCI              |
| 16         | B       | A           | ■ ■ ■      | SEC      |                  |
| 17         | B       | D           | ■ ■ ■      | SEC      |                  |
| 18         | A       | ✓           | ■ ■ ■      | EOI      | SCI              |
| 19         | B       | ✓           | ■ ■ ■      | EOI      | SCI              |
| 20         | C       | D           | ■ ■ ■      | COE, EOI | SCI              |
| 21         | A       | ✓           | ■ ■ ■      | COE, EOI | SCI              |
| 22         | A       | B           | ■ ■ ■      | WIC, EOI | SCI              |
| 23         | C       | B           | ■ ■ ■      | WIC, EOI |                  |
| 24         | D       | C           | ■ ■ ■      | SEC      |                  |
| 25         | C       | D           | ■ ■ ■      | SEC      |                  |
| 26         | A       | ✓           | ■ ■ ■      | COE, EOI |                  |
| 27         | A       | D           | ■ ■ ■      | EOI      |                  |
| 28         | B       | ✓           | ■ ■ ■      | COE, EOI |                  |
| 29         | D       | A           | ■ ■ ■      | WIC, EOI |                  |
| 30         | C       | B           | ■ ■ ■      | SEC      |                  |
| 31         | D       | ✓           | ■ ■ ■      | EOI      |                  |
| 32         | B       | ✓           | ■ ■ ■      | SEC      |                  |
| 33         | D       | ✓           | ■ ■ ■      | SEC      |                  |
| 34         | D       | B           | ■ ■ ■      | EOI      |                  |
| 35         | D       | ✓           | ■ ■ ■      | SEC      |                  |
| 36         | B       | A           | ■ ■ ■      | EOI      |                  |
| 37         | C       | D           | ■ ■ ■      | COE, EOI |                  |
| 38         | A       | ✓           | ■ ■ ■      | SEC      |                  |
| 39         | C       | ✓           | ■ ■ ■      | SEC      |                  |
| 40         | D       | A           | ■ ■ ■      | WIC, EOI |                  |
| 41         | D       | B           | ■ ■ ■      | SEC      |                  |
| 42         | A       | Ø           | ■ ■ ■      | SEC      |                  |
| 43         | C       | B           | ■ ■ ■      | COE, EOI |                  |
| 44         | B       | C           | ■ ■ ■      | WIC, EOI |                  |

## Math Test-Calculator

| Question # | Correct | Your Answer | Difficulty | Subscore | Cross-Test Score |
|------------|---------|-------------|------------|----------|------------------|
| 1          | B       | ✓           | ■ ■ ■      | PSD      | HSS              |
| 2          | A       | ✓           | ■ ■ ■      | HOA      |                  |
| 3          | B       | ✓           | ■ ■ ■      | PSD      | SCI              |
| 4          | D       | ✓           | ■ ■ ■      | HOA      |                  |
| 5          | B       | C           | ■ ■ ■      | PSD      |                  |
| 6          | A       | ✓           | ■ ■ ■      | PSD      |                  |
| 7          | B       | ✓           | ■ ■ ■      | PSD      |                  |
| 8          | C       | B           | ■ ■ ■      | PSD      |                  |
| 9          | A       | ✓           | ■ ■ ■      | PAM      |                  |
| 10         | D       | C           | ■ ■ ■      | HOA      |                  |
| 11         | D       | ✓           | ■ ■ ■      | PSD      | HSS              |
| 12         | A       | ✓           | ■ ■ ■      | PSD      |                  |
| 13         | B       | ✓           | ■ ■ ■      | PSD      |                  |
| 14         | C       | ✓           | ■ ■ ■      | PSD      | SCI              |

| Question # | Correct | Your Answer | Difficulty | Subscore | Cross-Test Score |
|------------|---------|-------------|------------|----------|------------------|
| 15         | C       | A           | ■ ■ ■      |          |                  |
| 16         | B       | ✓           | ■ ■ ■      | PSD      | HSS              |
| 17         | D       | ✓           | ■ ■ ■      | PSD      |                  |
| 18         | B       | A           | ■ ■ ■      | PSD      | HSS              |
| 19         | C       | A           | ■ ■ ■      | HOA      |                  |
| 20         | B       | ✓           | ■ ■ ■      | PAM      |                  |
| 21         | B       | C           | ■ ■ ■      | HOA      |                  |
| 22         | D       | C           | ■ ■ ■      | PAM      |                  |
| 23         | D       | B           | ■ ■ ■      | HOA      | SCI              |
| 24         | C       | Ø           | ■ ■ ■      | PAM      | SCI              |
| 25         | B       | A           | ■ ■ ■      | PSD      | SCI              |
| 26         | D       | ✓           | ■ ■ ■      | PAM      |                  |
| 27         | D       | A           | ■ ■ ■      | HOA      |                  |

| Question # | Correct | Your Answer | Difficulty | Subscore | Cross-Test Score |
|------------|---------|-------------|------------|----------|------------------|
| 28         | 65      | 60          | ■ ■ ■      | HOA      |                  |
| 29         | 0, 12   | 2           | ■ ■ ■      | PAM      |                  |
| 30         | 1368    | Ø           | ■ ■ ■      | PSD      | HSS              |
| 31         | 85      | 75          | ■ ■ ■      | PSD      | HSS              |

## Math Test-No Calculator

| Question # | Correct | Your Answer | Difficulty | Subscore | Cross-Test Score |
|------------|---------|-------------|------------|----------|------------------|
| 1          | D       | ✓           | ■ ■ ■      | PAM      |                  |
| 2          | A       | ✓           | ■ ■ ■      | PAM      | SCI              |
| 3          | B       | ✓           | ■ ■ ■      | PAM      |                  |
| 4          | C       | B           | ■ ■ ■      | PAM      |                  |
| 5          | C       | ✓           | ■ ■ ■      | HOA      |                  |
| 6          | B       | ✓           | ■ ■ ■      | HOA      | SCI              |
| 7          | A       | ✓           | ■ ■ ■      | HOA      |                  |

| Question # | Correct | Your Answer | Difficulty | Subscore | Cross-Test Score |
|------------|---------|-------------|------------|----------|------------------|
| 8          | B       | C           | ■ ■ ■      | HOA      |                  |
| 9          | C       | ✓           | ■ ■ ■      | HOA      |                  |
| 10         | D       | ✓           | ■ ■ ■      | HOA      | HSS              |
| 11         | A       | C           | ■ ■ ■      |          |                  |
| 12         | C       | ✓           | ■ ■ ■      | PAM      |                  |
| 13         | B       | A           | ■ ■ ■      | PAM      |                  |

| Question # | Correct | Your Answer | Difficulty | Subscore | Cross-Test Score |
|------------|---------|-------------|------------|----------|------------------|
| 14         | 2       | 0           | ■ ■ ■      | HOA      |                  |
| 15         | 90      | 80          | ■ ■ ■      | HOA      |                  |
| 16         | 1       | 2           | ■ ■ ■      | PAM      |                  |
| 17         | 0       | ✓           | ■ ■ ■      | PAM      |                  |

Access Code  
A02670146P

See the questions, and the answer explanations, online  
[studentscores.collegeboard.org](http://studentscores.collegeboard.org)

© 2016 The College Board. College Board, AP, SAT, and the acorn logo are registered trademarks of the College Board. PSAT/NMSQT is a registered trademark of the College Board and National Merit Scholarship Corporation. National Merit and the corporate "Lamp of Learning" logo are federally registered service marks of National Merit Scholarship Corporation. Visit the College Board on the web: [www.collegeboard.org](http://www.collegeboard.org). You can also visit National Merit Scholarship Corporation at [www.nationalmerit.org](http://www.nationalmerit.org).

Khan Academy is a registered trademark in the United States and other jurisdictions.

Ima B. Student 2016, Grade: 11th Grade

### Subscore

COE Command of Evidence  
WIC Words in Context  
EOI Expression of Ideas  
SEC Standard English Conventions  
HOA Heart of Algebra  
PSD Problem Solving and Data Analysis  
PAM Passport to Advanced Math

### Key

✓ Correct  
Ø Omitted  
U Unscorable  
■ ■ ■ Easy  
■ ■ ■ Medium  
■ ■ ■ Hard

### Cross-Test Score

HSS Analysis in History/Social Studies  
SCI Analysis in Science

00249-081 160330944

# VISUAL & PERFORMING ARTS

Brad Fowers-Department Chair

Elizabeth Johnson-Strings & Percussion

Romney Clements-Fall Musical

Marissa Kinneavy-Dance

Lura Wilhelm-Visual Arts

## Advanced Art Students Teach Art in Our Community:

On January 13<sup>th</sup> we will have 7 art lessons created by our very own U-Prep artists and taught to patrons of Turtle Bay. Ms. Wilhelm will be sending out an email with the flyer as we get closer to the date. Here is a preview for this event:

| <u>Time</u> | <u>Ages</u> | <u>Artist</u> | <u>Medium</u>             | <u>Subject</u>         | <u>Objective</u>   |
|-------------|-------------|---------------|---------------------------|------------------------|--|
| 10:30-11:05 | 8 - Up      | Claire        | Sharpie and Tempera Cakes | Cats                   | Make a cat with shapes and washes.                                     |
| 11:15-11:55 | 8 - Up      | Jaden         | Sharpie and Tempera Cakes | <b>Dragon</b>          | Produce a dragon with line, texture and expressive color.              |
| 12:00-12:40 | 8 - Up      | Talem         | Sharpie and Tempera Cakes | Portrait               | Create a proportional human portrait using analogous colors.           |
| 12:45-1:25  | 8 - Up      | Ashton        | Sharpie and Tempera Cakes | Giraffe                | Construct a giraffe using arbitrary and complementary colors.          |
| 1:30-1:25   | 4 - 8       | Becca         | Liquid Tempera            | Warm and Cool Hearts   | Create a heart that represents you using different tinting techniques. |
| 2:15-2:55   | 4 - 8       | Hannah        | Chalk Stencils            | Non Objective Abstract | Overlap shapes using color and value.                                  |
| 3:00-3:40   | 4 - UP      | Olivia/Lili   | Mixed Media               | Masks                  | Build a mixed media mask that demonstrates a person unique theme.      |



# VISUAL & PERFORMING ARTS

Brad Fowers-Department Chair

Elizabeth Johnson-Strings & Percussion

Romney Clements-Fall Musical

Marissa Kinneavy-Dance

Lura Wilhelm-Visual Arts



Dorothy has found her way back to Kansas! The Wizard of Oz was a great success, and proved to be a glorious piece of theatre for all who attended. The singing, acting, dancing, costuming and sets were awe inspiring. The Wizard of Oz definitely continued the tradition of high caliber musicals at U-Prep. I could not be more proud of the production staff and the students. Many tireless hours were given to pull off this very technical musical. The parents and members of the cast worked diligently, and now are enjoying a well-deserved break. Many thanks to the many audience members who attended and supported our talented students. ~Director Romney Clements



- \* The U-Prep Dance Department is working hard on choreography for their upcoming Just Dance! Performance on March 2<sup>nd</sup> and 3<sup>rd</sup>. Many styles of dance will be showcased by over 120 of our U-Prep students. Don't forget to mark your calendars!

## DANCE NEWS!

- \* The U-Prep Dance Team is looking forward to performing at our varsity basketball halftimes. In addition, they will once again be performing at a NBA Kings Game Halftime Show the first weekend of January.

### WINTER CONCERTS 2017

U-Prep's strings and drum corps students will be presenting their winter concert on Tuesday, December 12<sup>th</sup> at 7 PM on the Marr stage. Admission is free. This concert marks the debut of U-Prep's Chamber Orchestra. The following evening, on December 13<sup>th</sup>, U-Prep's full symphonic orchestra will be performing at the band and choir concert.



# VISUAL & PERFORMING ARTS

Brad Fowers-Department Chair

Elizabeth Johnson-Strings & Percussion

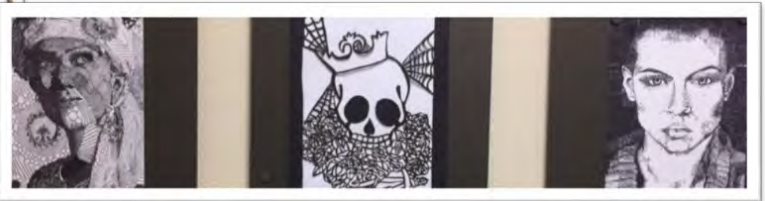
Romney Clements-Fall Musical

Marissa Kinneavy-Dance

Lura Wilhelm-Visual Arts

## Arts Alive!

On November 8<sup>th</sup> the Shasta County Office of Education (SCOE) hosted the 2<sup>nd</sup> Annual Arts Alive Art Show. Eight Shasta County teachers displayed their art work alongside hundreds of student works. U-Prep's own Ms. Wilhelm and her students had a wonderful time displaying their work and chatting with the public. Music was played by strings instructor Elizabeth Johnson and many of her strings students. If you are a lover of art, music and food, look forward to attending Arts Alive next year, same time same place.



### U-Prep High School Art Club Field Trip

On December 2<sup>nd</sup>, the High School Art Club and art students went to San Francisco to experience the De Young Museum in Golden Gate Park. Ms. Wilhelm, 20 students and 6 chaperones spent the day viewing and interacting with art.



### SPRING PLAY

The month of March in 2018 will see the return of U-Prep's spring play, "Pygmalion." Set in Merry Olde England, it tells the story of Professor Henry Higgins taking on a dare to transform Eliza Doolittle, flower girl, into a woman of high society.

Auditions are set for December 11-12 at 3:30pm in the band room

Appearing on the Marr stage, show dates in March are to be announced.



# ASSOCIATED STUDENT BODY



JASPAL GADDY: JUNIOR HIGH ASB ADVISOR  
KENT SMITH: HIGH SCHOOL ASB ADVISOR

## GIVING THANKS



On Friday, November 17, the high school student government class celebrated a Thanksgiving potluck together. It was a special time of bonding around good food, as well as taking the time for each member to share one thing he or she is thankful for.

### WINTER DANCE—UGLY SWEATER THEME

The next Junior high dance is Friday, December 8 in the Hoosier Gym. Get your favorite Ugly Sweater and join us to kick off the holiday season. There will be a DJ, free photo booth, a snack bar and fun! 6<sup>th</sup> grade is 5:30-7pm and 7/8<sup>th</sup> grades are 7-8:30pm. The cost is \$3 with ASB and \$5 without.



JUNIOR HIGH  
STUDENT GOVERNMENT



### CANNED FOOD DRIVE

Thank you to all of our families and students that contributed to our annual food drive. We had over 1500 food items donated to the mission for families in need during the holiday season. Your support is invaluable and greatly appreciated!



# U-Prep Junior High Athletics



[www.uprepathletics.net](http://www.uprepathletics.net)

ROCHELLE ANGLEY JH ATHLETIC ADMINISTRATOR  
CORY REAGAN JH ATHLETIC DIRECTOR  
SARAH KENDALL ATHLETIC SECRETARY

## FLAG FOOTBALL SCHEDULE

Head Coach: Bobby Shufelberger

Dec. 11 Vs. Sequoia Green @ Home 4:00

Dec. 13 Vs. Parsons @ Home 4:00



## JH GIRLS BASKETBALL

Coaches:

6th: Matt Williams; 7th: Brian Nichols; 8th: Esther Wofford

Dec. 11 Vs. Mtn. View @ Home 6th/7th/8th 4/5/6pm

Dec. 13 Vs. Parsons @ Home 6th/7th/8th 4/5/6pm



## 7<sup>th</sup> and 8<sup>th</sup> Grade Girls Basketball

The 8<sup>th</sup> Grade Girls team, coached by Esther Wolford, started the basketball season off, taking first place in both the Parsons and the Anderson Basketball Tournaments. The team is undefeated so far in the season. The 7<sup>th</sup> Grade Girls team, with Brian Nichols coaching, took first place in the Parsons Tournament and have had a great season so far as well.



## JH BOYS BASKETBALL

Coaches:

6th: Joe Maikranz ; 7th: Dwayne Lindsey; 8th: Anthony Williams

|            |                                 |             |         |
|------------|---------------------------------|-------------|---------|
| Jan. 11    | Vs. Bidwell @ Home              | 7th/8th     | 5/6pm   |
| Jan. 17    | Vs. Shasta Lake @ Home          | 6th/7th/8th | 4/5/6pm |
| Jan. 19-20 | Brett Mercer Tourney @ Parsons  | 7th/8th     | TBA     |
| Jan 22     | Vs. Boulder Crk. @ Boulder Crk. | 6th/7th/8th | 4/5/6pm |
| Jan. 24    | Vs. Sequoia Gold @ Sequoia      | 6th/7th/8th | 4/5/6pm |
| Jan. 29    | Vs. Mtn. View @ Home            | 6th/7th/8th | 4/5/6pm |
| Jan. 31    | Vs. Parsons @ Home              | 6th/7th/8th | 4/5/6pm |
| Feb. 5     | Vs. Grant @ Grant               | 6th/7th/8th | 4/5/6pm |
| Feb. 7     | Vs. RC @ RC                     | 6th/7th/8th | 4/5/6pm |
| Feb. 14    | Vs. Sequoia Gold @ Home         | 6th/7th/8th | 4/5/6pm |
| Feb. 21    | Vs. Mtn. View @ Mtn. View       | 6th/7th/8th | 4/5/6pm |
| Feb. 26    | Vs. Parsons @ Parsons           | 6th/7th/8th | 4/5/6pm |

# U-PREP HIGH SCHOOL ATHLETICS

## VARSITY BOYS SOCCER

Coach: Brian Nichols

|         |                             |      |
|---------|-----------------------------|------|
| Dec. 14 | Vs. Enterprise @ Enterprise | 6:00 |
| Dec. 21 | Vs. Orland @ Home           | 5:15 |



MONICA CABRAL - HIGH SCHOOL ATHLETIC ADMINISTRATOR  
 STEVEN SCHUSTER - HIGH SCHOOL ATHLETIC DIRECTOR  
 SARAH KENDALL - ATHLETIC SECRETARY



## VARSITY GIRLS SOCCER

Coach: Rich Bourne

|          |                             |      |
|----------|-----------------------------|------|
| Dec. 8&9 | Foothill Tourney @ Foothill | TBA  |
| Dec. 14  | Vs. Enterprise @ Enterprise | 4:00 |
| Dec. 15  | Vs. Foothill @ Foothill     | 4:00 |
| Dec. 21  | Vs. Orland @ Home           | 3:15 |



GIRLS VARSITY SOCCER WIN OROVILLE TOURNNEY

## HIGH SCHOOL BOYS BASKETBALL

V: Mark Stephens; JV: James Williams; Frosh Coach: Open

|            |                             |                |            |
|------------|-----------------------------|----------------|------------|
| Dec. 7-9   | Lehigh Classic @ CV         | TBA            | JV/V       |
| Dec. 12    | Vs. Las Plumas @ Home       | 4:00/5:30/7:00 | F/JV/V     |
| Dec. 21    | Vs. Corning @ TBA           | 4:30/6:00/7:30 | F/JV/V     |
| Dec. 14-16 | WV Tourney @ WV             | TBA            | Frosh Only |
| Dec. 28-30 | Foothill Tourney @ Foothill | TBA            | F/JV       |
| Dec. 28-30 | Enterprise Tourney @ Ent.   | TBA            | V Only     |



## HIGH SCHOOL GIRLS BASKETBALL

Var: Steven Schuster; JV: Joe Fernandez; Frosh: Bradd Miller

|            |                        |     |            |
|------------|------------------------|-----|------------|
| Dec. 8/9   | UPrep Tourney          | TBA | JV Only    |
| Dec. 7-9   | Corning Tourney        | TBA | V Only     |
| Dec. 14-16 | Central Valley Tourney | TBA | JV/V       |
| Dec. 21/22 | UPrep Tourney          | TBA | Frosh Only |
| Dec. 28-30 | Ketchikan, AL Tourney  | TBA | V Only     |





NEWS AT THE



# U-PREP CHEER!

U-Prep's Junior High Cheer team has been practicing all fall to prepare for their upcoming cheer season. They kick off cheering for our 7<sup>th</sup> and 8<sup>th</sup> grade boys basketball teams upon our return in January. The junior high cheerleaders will also compete at West Cottonwood's annual Cheer Competition on January 13<sup>th</sup>. Wish them luck!



## PENGUINS & PAJAMAS!



U-Prep MASC (Math and Science Club) members had the opportunity to experience a night at the museum! Students explored the exhibits after-hours and discovered the deepest depths of the oceans, traveled to the tops of rainforests, blasted off into outer space during their own private planetarium show, and then settled in for story time after snacking on milk and cookies.

## VARSITY VOLLEYBALL ALL LEAGUE AWARDS

All League: Savannah C.

All League: Kennedy K.

Honorable Mention: Gigi E.

Lauren A. was invited to play in the  
**North's All Star Game**

Coach Tawni Kramer is nominated as  
Coach of the Year for the North Team

*CONGRATULATIONS  
LADY PANTHERS!*



## Latin Club travels to Ludi Novembres

Latin teachers Dr. Groves and Mr. Dean traveled with 22 students to Ludi Novembres at St. Francis High School in Sacramento on November 11th for a day of games, academic competitions, lectures, and fun. 18 schools and over 400 students competed in the event. Joseph J. (Grammar), Thomas N. (Vocabulary) and Sophie M. (Reading Comprehension) all earned third place awards.



## Sophomore Class Trip!

March 14-16, 2018



2 nights, 2 Oregon Shakespeare Festival plays, a tour of Southern Oregon University and more!

Cost per person (student and chaperone) is \$275, due in the ASB office by December 15.

Permission slips will go home after Thanksgiving break.

Please direct questions to Mrs. Deter at [rdeter@suhsd.net](mailto:rdeter@suhsd.net)

For updates, text @928k97 to 81010, or go to [remind.com/join/928k97](http://remind.com/join/928k97)



# SUPPORT U-PREP

## End of the Yellow Brick Road

### U-PREP MUSICAL FOUNDATION

With the help of the Wizard and Glinda the Good Witch, the Scarecrow got his brain; the Tinman, his heart; the Lion, his courage; and Dorothy returned home to Kansas after a great run of *The Wizard of Oz* this November at U-Prep. The U-Prep Musical Foundation wishes to thank all those who came to see the show and who supported us with their generous donations, theater and program ads, sponsorships, and the purchase of yellow bricks for our "yellow brick road" fundraiser. We also want to thank all the parents, grandparents, and family members who gave countless hours to bring Kansas and the Land of OZ to life. It would not have been the success it was without you.

Please continue to look for updates from the Musical Foundation for exciting events happening in the year to come as we are already planning for next year's show. You won't want to miss it!



Senior Grad ads are available for purchase beginning on Monday, December 4<sup>th</sup>! This is a wonderful opportunity to honor your upcoming graduate. Purchase your senior ad on Jostens.com. Instructions, prices and additional information is available at the yearbook website:

[illegible]

# ANDOR RETURNS!



## Volleyball1on1 2 Day Volleyball Clinic Registration Form

**What:** Volleyball1on1 2 Day Clinic

**Time:** 8 am – 5 pm Saturday and Sunday 8 am – 5 pm.

**Where:** Uprep High School

**When:** 2 Days – January 20 - 21, 2018

**(Setter Training Starts at 7:30 am)**

**Cost:** \$75.00 for 1 day or \$150.00 for 2 days.

Camp Includes: Volleyball1on1 6-month online subscription (valued @149.00), Volleyball1on1 Instructors coaching fees.

Camp Option: Volleyball1on1 Ball (valued @ \$34.95) – Cost \$5.

**Please Include:** Yes ☐ No ☐

**Player Name:** \_\_\_\_\_ **1 or 2 Day:** \_\_\_\_\_ **Grade:** \_\_\_\_\_ **Payment Amount:** \_\_\_\_\_

**Parent /Guardian Name:** \_\_\_\_\_ **Parent Phone #:** \_\_\_\_\_

**\*Parent Email** \_\_\_\_\_ **\*Player Email:** \_\_\_\_\_

**\*Make sure emails are legible, this is how we give you access to the website.**

**PAYMENT DEADLINE: PLEASE RETURN FORM WITH CHECK PAYMENT TO UPREP VOLLEYBALL BY January 9th (preferably earlier so that we can reserve Andor's time) (SPACE IS LIMITED – THIS WILL SELL OUT!!!)**

### **ABOUT VOLLEYBALL1ON1:**

Andor Gyulai is the founder of Volleyball1on1 ([www.volleyball1on1.com](http://www.volleyball1on1.com)) headquartered in Los Angeles, California. Volleyball1on1 is the first (since 2009) and number one instructional volleyball coaching web site in the world featuring over 2500 videos from the absolute best coaches and players in the sport of volleyball sharing insider instructional techniques, drills, practice plans and more 1 on 1 for you!



**Volleyball1on1 Modern Coaching System:** The teaching methods Volleyball1on1 Instructors uses during a Volleyball1on1 clinics represent over 25 years of coaching experience along with scientific study of modern volleyball coaching techniques. One of these techniques, introduced by legendary player and coach, Karch Kiraly is called "Reading the Game" which offers players cutting edge methods to achieve their fullest playing potential in a much shorter time period than traditional systems. The Volleyball1on1 Modern Coaching system is based on studied scientific principles from human kinetics, organizational behavior, statistics, and psychology. With Andor's Volleyball1on1 clinics you will learn great techniques, have a lot of fun, and be well prepared for your high school / club tryouts to have the best season to come!

### **Clinic Schedule and What Attendees Will Learn:**

**Day 1 (Saturday) Skill Development Clinic: Serving, Passing and Spiking.** Attendees will learn how to develop an effective SERVE including technique for a jump float serve, the most effective serve in women's volleyball. Players will also learn correct passing technique including how to "Slow The Ball Down," and spiking technique for their ARMSWING and APROACH. Andor (Owner) is the most popular volleyball instructor in the world on volleyball spiking technique. Visit the link to see why: <http://www.volleyball1on1.com/2-million-and-counting-my-most-popular-volleyball-spiking-videos-on-youtube/>

**Day 2 (Sunday) Skill Development Clinic: Setting, Blocking and Defense.** Attendees will learn proven technique on how to Set, Block and play Defense using Modern Coaching Systems of "Reading the Game" and "Slowing the Ball Down." This includes advanced techniques for dealing with "Pressure," "How to get in the Zone" and more.

Andor will share techniques used by the best players in the world to help you rapidly improve your volleyball skills.

**CAMP CO-ORDINATOR CONTACT: Tawni Kramer**

**tkramer@suhsd.net**

Volleyball1on1.com

13428 Maxella Drive, #302 Marina Del Rey, CA 90292



## Raising Happiness:

### *10 Simple Steps for More Joyful Kids and Happier Parents*

by Christine Carter

What do we wish most for our children? Next to being healthy, we want them to be happy, of course! Fortunately, a wide array of scientific studies show that happiness is a learned behavior, a muscle we can help our children build and maintain.

Drawing on what psychology, sociology, and neuroscience have proven about confidence, gratefulness, and optimism, and using her own chaotic and often hilarious real-world adventures as a mom to demonstrate do's and don'ts in action, Christine Carter, Ph.D, executive director of UC Berkeley's Greater Good Science Center, boils the process down to 10 simple happiness-inducing steps.

With great wit, wisdom, and compassion, Carter covers the day-to-day pressure points of parenting—how best to discipline, get kids to school and activities on time, and get dinner on the table—as well as the more elusive issues of helping children build healthy friendships and develop emotional intelligence. In these 10 key steps, she helps you interact confidently and consistently with your kids to foster the skills, habits, and mindsets that will set the stage for positive emotions now and into their adolescence and beyond. Inside you will discover

- the best way avoid raising a brat—changing bad habits into good ones
- tips on how to change your kids' attitude into gratitude
- the trap of trying to be perfect—and how to stay clear of its pitfalls
- the right way to praise kids—and why too much of the wrong kind can be just as bad as not enough
- the spirit of kindness—how to raise kind, compassionate, and loving children
- strategies for inspiring kids to do boring (but necessary) tasks—and become more self-motivated in the process

Complete with a series of "try this" tips, secrets, and strategies, **Raising Happiness** is a one-of-a-kind resource that will help you instill joy in your kids—and, in the process, become more joyful yourself.

Continued on following page...

\*\*\* 2<sup>nd</sup> review of **Raising Happiness**

We all want the best for our kids. We want our children to be successful, get good grades and have impeccable manners. On top of these goals we also want our children to have a happy life. How is this all possible? Dr. Christine Carter gives step-by-step advice on emotion-coaching your child. She does this in her book *Raising Happiness*. She focuses on these 10 items:

- \* Put on your own oxygen mask first
- \* Build a village
- \* Expect effort, not perfection
- \* Chose gratitude, forgiveness, and optimism
- \* Raise their emotional intelligence
- \* Form happiness habits
- \* Teach self-discipline
- \* Enjoy the present moment
- \* Rig their environment for happiness
- \* Eat dinner together

All of this can be practiced during a 9-minute meal! The chapter that gave me that "aha moment" was Chapter 10: Eat Dinner Together. Dr. Carter expresses that the benefits of family mealtime are remarkable. Having dinner as a family is the most important piece of science-based advice that she gives in her book. Studies show that kids who eat dinner with their families on a regular basis are more emotionally stable and less likely to abuse drugs and alcohol. They get better grades and they also have fewer depressive symptoms. Family dinner trumps reading to your kids in preparing them for school!

Why is family dinnertime so important? Well for starters many social skills are learned at the dinner table. Research shows a strong connection between language development and dinnertime, and language is THE most important aspect of social intelligence that we have.



# The Sixth Annual **Directing Change** Program and Film Contest



To keep up with the latest updates, visit:  
[www.facebook.com/DirectingChangeCA](http://www.facebook.com/DirectingChangeCA)

**CALLING ALL YOUNG FILMMAKERS** AND CHANGE AGENTS! MAKE A DIFFERENCE AND WIN CASH PRIZES BY CREATING SHORT FILMS THAT WILL BE USED TO **RAISE AWARENESS** AND **HELP YOUNG PEOPLE** ACROSS CALIFORNIA.

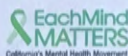
SUBMISSION CATEGORIES:

**SUICIDE PREVENTION** • **MENTAL HEALTH MATTERS** • **THROUGH THE LENS OF CULTURE**  
**ANIMATED SHORT** • **SANAMENTE**

**SUBMISSIONS ARE DUE MARCH 1, 2018.**



Visit **[www.DirectingChangeCA.org](http://www.DirectingChangeCA.org)**  
for contest rules and educational resources.



Your Social Marketer, Inc.

# SUPPORT U-PREP



## PREP SOBER GRAD

### SOBER GRAD CERTIFICATES

#### SUPERSTARS

AJ S. (1)  
 Claire H. (1)  
 Dawson W.(1)  
 Kristine C. (1)  
 Michael B.(1)  
 Andrew L. (1)  
 Natalie J.(1)  
 Allison G.(1½)  
 Bridget G.(1½)  
 Julie R. (2)  
 Taylor W.(2)  
 Ashton A. (2)  
 Shannon C.(2)  
 Cody J. (2)  
 Taylor S. (2)  
 Donnie M. (3)



#### BURRITO BANDITO WINNERS

Shannon C.  
 Donnie M.

#### JAMBA JUICE WINNERS

Ashton A.  
 Taylor W.

#### COMMUNITY SUPPORTERS OF 2018

Jeff Avery ~ State Farm Insurance  
 SJ Denham Chrysler Jeep Fiat  
 Gentle Touch Dentistry  
 Gard Heating & Air  
 Legal Shield Independent Associate

Redding Subaru  
 Charles Cooley DDS  
 Frontier Girls LLC  
 Merrill Lynch  
 Gregory Dean Taylor DDS

#### INDIVIDUAL SUPPORTERS OF 2018

Michael & Jennie Sierra  
 Mike & Melody Smith  
 Charles & Colette Crannell  
 Larry & Judy Crewell  
 Stacey & Sam Jimenez

Samuel & Tamara Adcock  
 Jerry & Evelyn Sarria  
 Christopher & Daniele Crannell  
 Shannon & Sabrina McGrane  
 Barbara Weber



SoberGrad is requesting donations of 100+ pairs of brand new boxer shorts (not boxer briefs) for Boxer Bingo. A donation box will be in the main office beginning Monday, 12/11/17. Please consider picking up a couple pair or a package while you're out shopping. We need all sizes, and anyone can donate. Thank you!

Text 530-215-6919 with any questions.

Follow us!

Facebook: UPrep Sober Grad

Instagram: uprepsobegrad

Remind: Text @uprepsg18 to 81010

# University Preparatory School

## 2017-2018 School Calendar

| July 2017 |    |    |    |    |    |    |
|-----------|----|----|----|----|----|----|
| Su        | M  | Tu | W  | Th | F  | Sa |
|           |    |    |    |    |    | 1  |
| 2         | 3  | 4  | 5  | 6  | 7  | 8  |
| 9         | 10 | 11 | 12 | 13 | 14 | 15 |
| 16        | 17 | 18 | 19 | 20 | 21 | 22 |
| 23        | 24 | 25 | 26 | 27 | 28 | 29 |
| 30        | 31 |    |    |    |    |    |

20

1st Quarter Ends: October 13 (42)  
 1st Semester Ends: December 20 (42)  
 3rd Quarter Ends: March 23 (51)  
 2nd Semester Ends: May 31 (40)

**Shaded = Student Attendance Days (175)**

| August 2017 |    |    |    |    |    |    |
|-------------|----|----|----|----|----|----|
| Su          | M  | Tu | W  | Th | F  | Sa |
|             |    | 1  | 2  | 3  | 4  | 5  |
| 6           | 7  | 8  | 9  | 10 | 11 | 12 |
| 13          | 14 | 15 | 16 | 17 | 18 | 19 |
| 20          | 21 | 22 | 23 | 24 | 25 | 26 |
| 27          | 28 | 29 | 30 | 31 |    |    |

14

| September 2017 |    |    |    |    |    |    |
|----------------|----|----|----|----|----|----|
| Su             | M  | Tu | W  | Th | F  | Sa |
|                |    |    |    |    | 1  | 2  |
| 3              | 4  | 5  | 6  | 7  | 8  | 9  |
| 10             | 11 | 12 | 13 | 14 | 15 | 16 |
| 17             | 18 | 19 | 20 | 21 | 22 | 23 |
| 24             | 25 | 26 | 27 | 28 | 29 | 30 |

16

| October 2017 |    |    |    |    |    |    |
|--------------|----|----|----|----|----|----|
| Su           | M  | Tu | W  | Th | F  | Sa |
| 1            | 2  | 3  | 4  | 5  | 6  | 7  |
| 8            | 9  | 10 | 11 | 12 | 13 | 14 |
| 15           | 16 | 17 | 18 | 19 | 20 | 21 |
| 22           | 23 | 24 | 25 | 26 | 27 | 28 |
| 29           | 30 | 31 |    |    |    |    |

18

| November 2017 |    |    |    |    |    |    |
|---------------|----|----|----|----|----|----|
| Su            | M  | Tu | W  | Th | F  | Sa |
|               |    |    | 1  | 2  | 3  | 4  |
| 5             | 6  | 7  | 8  | 9  | 10 | 11 |
| 12            | 13 | 14 | 15 | 16 | 17 | 18 |
| 19            | 20 | 21 | 22 | 23 | 24 | 25 |
| 26            | 27 | 28 | 29 | 30 |    |    |

21

| December 2017 |    |    |    |    |    |    |
|---------------|----|----|----|----|----|----|
| Su            | M  | Tu | W  | Th | F  | Sa |
|               |    |    |    |    | 1  | 2  |
| 3             | 4  | 5  | 6  | 7  | 8  | 9  |
| 10            | 11 | 12 | 13 | 14 | 15 | 16 |
| 17            | 18 | 19 | 20 | 21 | 22 | 23 |
| 24            | 25 | 26 | 27 | 28 | 29 | 30 |
| 31            |    |    |    |    |    |    |

14

| January 2018 |    |    |    |    |    |    |
|--------------|----|----|----|----|----|----|
| Su           | M  | Tu | W  | Th | F  | Sa |
|              | 1  | 2  | 3  | 4  | 5  | 6  |
| 7            | 8  | 9  | 10 | 11 | 12 | 13 |
| 14           | 15 | 16 | 17 | 18 | 19 | 20 |
| 21           | 22 | 23 | 24 | 25 | 26 | 27 |
| 28           | 29 | 30 | 31 |    |    |    |

22

| February 2018 |    |    |    |    |    |    |
|---------------|----|----|----|----|----|----|
| Su            | M  | Tu | W  | Th | F  | Sa |
|               |    |    |    | 1  | 2  | 3  |
| 4             | 5  | 6  | 7  | 8  | 9  | 10 |
| 11            | 12 | 13 | 14 | 15 | 16 | 17 |
| 18            | 19 | 20 | 21 | 22 | 23 | 24 |
| 25            | 26 | 27 | 28 |    |    |    |

22

| March 2018 |    |    |    |    |    |    |
|------------|----|----|----|----|----|----|
| Su         | M  | Tu | W  | Th | F  | Sa |
|            |    |    |    | 1  | 2  | 3  |
| 4          | 5  | 6  | 7  | 8  | 9  | 10 |
| 11         | 12 | 13 | 14 | 15 | 16 | 17 |
| 18         | 19 | 20 | 21 | 22 | 23 | 24 |
| 25         | 26 | 27 | 28 | 29 | 30 | 31 |

0

| April 2018 |    |    |    |    |    |    |
|------------|----|----|----|----|----|----|
| Su         | M  | Tu | W  | Th | F  | Sa |
| 1          | 2  | 3  | 4  | 5  | 6  | 7  |
| 8          | 9  | 10 | 11 | 12 | 13 | 14 |
| 15         | 16 | 17 | 18 | 19 | 20 | 21 |
| 22         | 23 | 24 | 25 | 26 | 27 | 28 |
| 29         | 30 |    |    |    |    |    |

| May 2018 |    |    |    |    |    |    |
|----------|----|----|----|----|----|----|
| Su       | M  | Tu | W  | Th | F  | Sa |
|          |    | 1  | 2  | 3  | 4  | 5  |
| 6        | 7  | 8  | 9  | 10 | 11 | 12 |
| 13       | 14 | 15 | 16 | 17 | 18 | 19 |
| 20       | 21 | 22 | 23 | 24 | 25 | 26 |
| 27       | 28 | 29 | 30 | 31 |    |    |

22

| June 2018 |    |    |    |    |    |    |
|-----------|----|----|----|----|----|----|
| Su        | M  | Tu | W  | Th | F  | Sa |
|           |    |    |    |    | 1  | 2  |
| 3         | 4  | 5  | 6  | 7  | 8  | 9  |
| 10        | 11 | 12 | 13 | 14 | 15 | 16 |
| 17        | 18 | 19 | 20 | 21 | 22 | 23 |
| 24        | 25 | 26 | 27 | 28 | 29 | 30 |

0

|                      |
|----------------------|
| Final Exams          |
| Minimum Day          |
| Academic Conferences |

### HOLIDAYS/RECESSES



Labor Day ..... Sep 4  
 Veteran's Day Holiday..... Nov 10  
*(by law must be Nov 11 if a weekday)*  
 Thanksgiving Break ..... Nov 20-24  
 Winter Break ..... Dec 21-Jan 8  
 Martin Luther King Day ..... Jan 15  
 Lincoln Day observed ..... Feb 12  
 Washington Day observed..... Feb 19  
 Spring Break ..... Mar 30-Apr 10  
 Memorial Day ..... May 28

Easter - April 1

### CERTIFICATED DATES

**School Starts:** August 16  
**School Ends:** May 31 **Graduation:** June 1

Staff Work Days ○ Aug 15  
 April 10  
 June 1

Staff Development Days △ Aug 14  
 Jan 8  
 April 9

Snow Day Makeup: April 10  
*(If snow day makeup is used, then April 10  
 work day will be moved to June 4)*